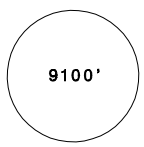
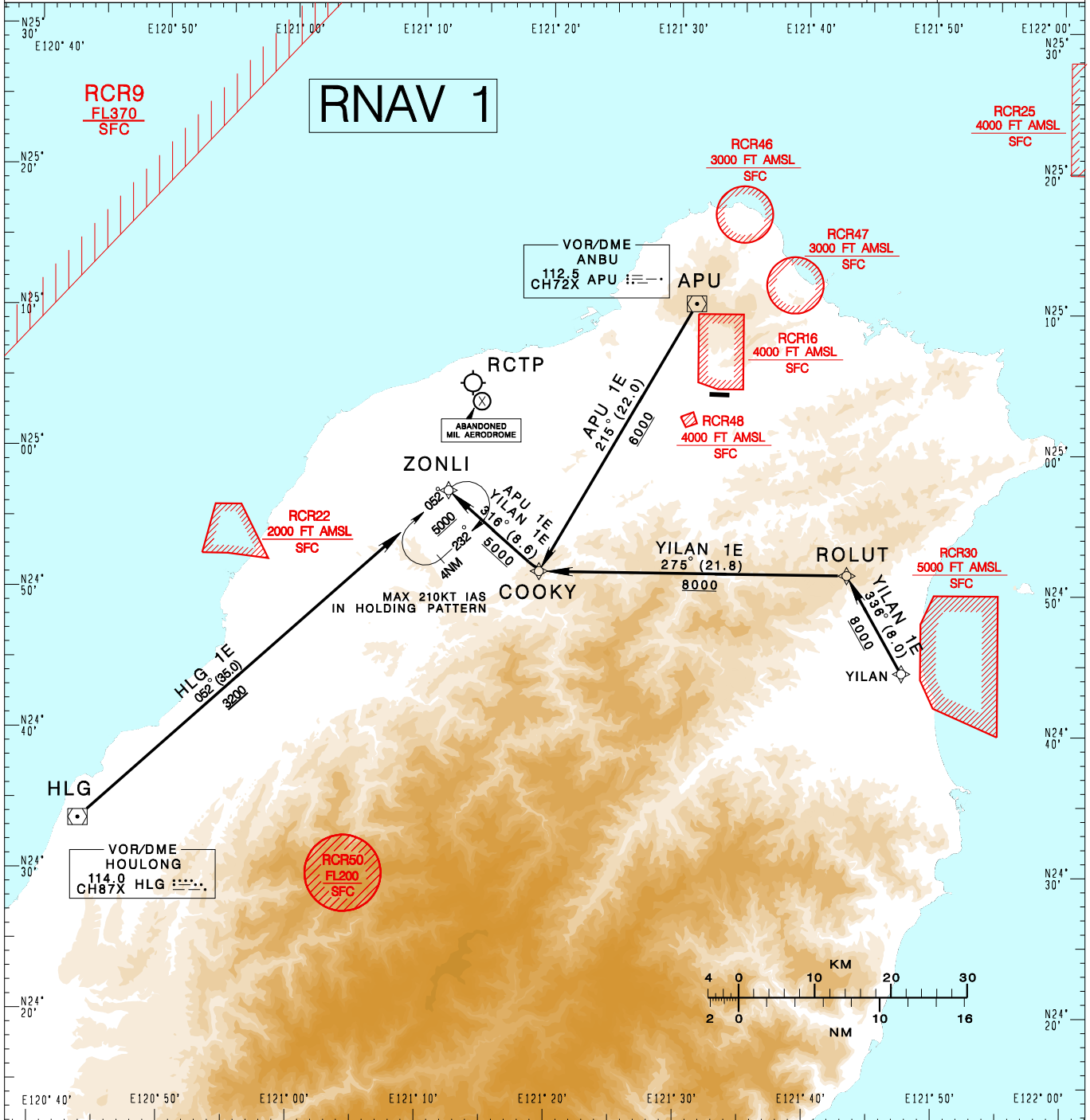


臺北/松山機場
TAIPEI/SONGSHAN AD

RCSS STAR
APU 1E RNAV(RWY 10)/HLG 1E RNAV(RWY 10)
YILAN 1E RNAV(RWY 10)

TAIPEI ACC 126.7 129.1 127.9	TAIPEI APP 119.7 119.6 125.1	ATIS 127.4 341	VAR 5° W-2022  9100' MSA APP 25NM	
Apt Elev: 18'		Trans Level: FL130		Trans Alt: 11,000'
BEARINGS ARE MAGNETIC; DISTANCES ARE NAUTICAL MILES; ELEVATIONS, HEIGHTS IN FEET				



CHANGES: NEW CHART

- ANBU ONE ECHO RNAV ARRIVAL
From APU to COOKY then ZONLI.
- HOULONG ONE ECHO RNAV ARRIVAL
From HLG to ZONLI.
- YILAN ONE ECHO RNAV ARRIVAL
From YILAN to ROLUT then COOKY, ZONLI.